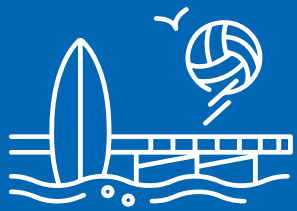


Dogs are permitted on the beaches in Saint Jean de Monts



Updated Mars 2023, please don't use this leaflet to create litter.
(c) Pexels-tom-verdant



Play your part!

Please be considerate and clean up after your dog and use the dog waste bins provided. Dog waste bags are available on request from the Tourist Office. Dog owners who do not clean up after their pets will be subject to a fine.

Salt water can cause irritation so please ensure you rinse down your dog thoroughly with clean water, especially their paws.

- | | | | |
|----|---------------------------|----|---------------------------|
| 12 | PLAGE DU PONT D'YEU | 16 | PLAGE DU GOLF |
| 13 | PLAGE DES TONNELLES | 17 | PLAGE DE LA BASE NAUTIQUE |
| 14 | PLAGE DE LA PARÉE DU JONC | 18 | PLAGE DE L'ESTACADE |
| 15 | PLAGE DE LA DAVIÈRE | 19 | PLAGE DE LA BAIGNEUSE |
| | | 20 | PLAGE DES OISEAUX |
| | | 21 | PLAGE DES DEMOISELLES |

Dogs are permitted on the beach throughout the year and must be kept on a lead.

Dogs are permitted on the beach from 1 October to 30 April and must be kept on a lead.

* no restrictions for guide dogs

For more information, please contact

the Tourist Office in Saint Jean de Monts :
+33 (0)2 72 78 80 80



DOGS PERMITTED ON THE BEACH

2023



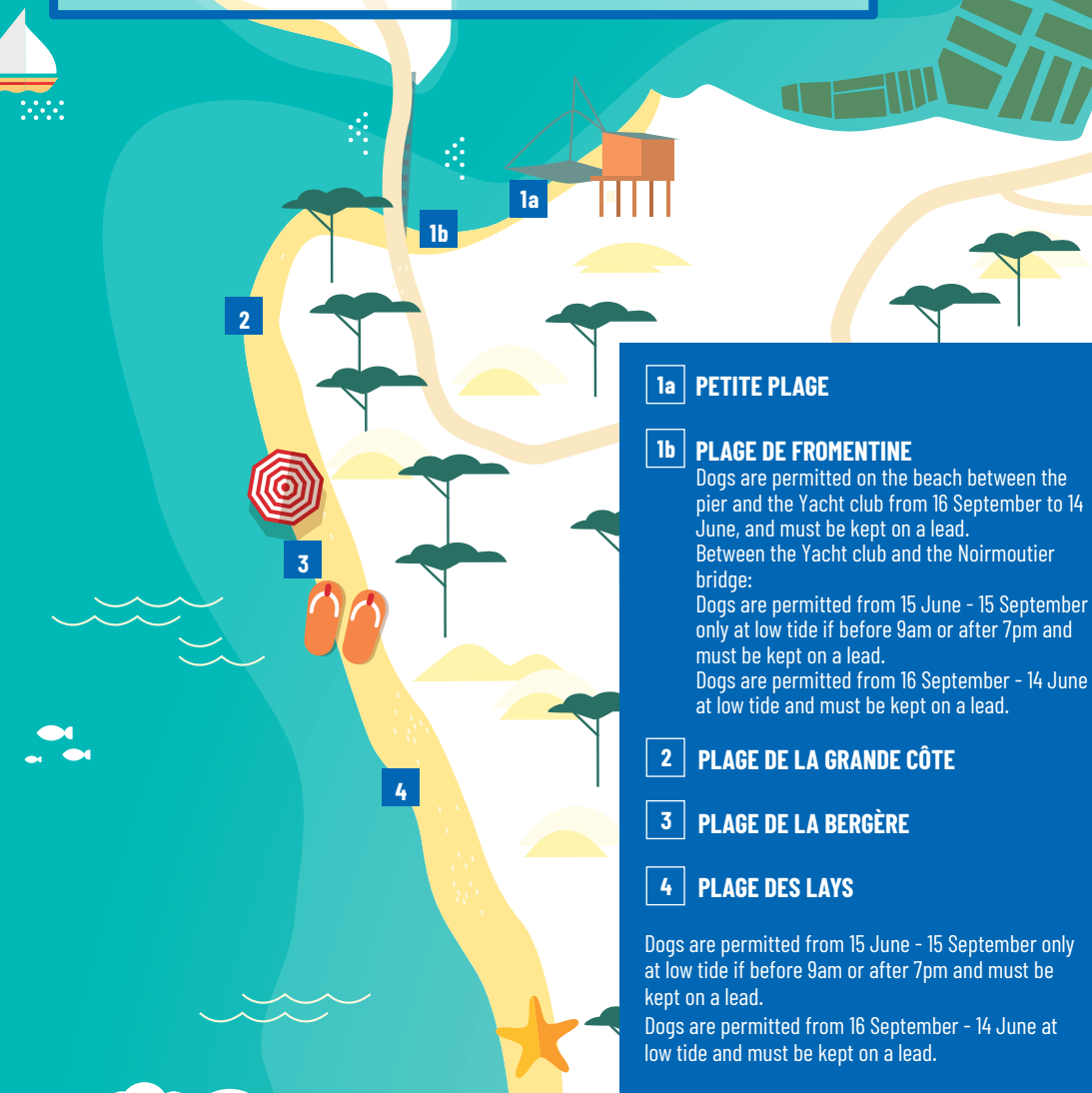
l'horizon pour seule limite

paysdesaintjeandemonts.fr
Suivez-nous sur   



PAYS DE
SAINT JEAN
DE MONTS
VENDÉE Océan

Dogs are permitted on the beaches in La Barre de Monts/Fromentine



1a PETITE PLAGE

1b PLAGE DE FROMENTINE

Dogs are permitted on the beach between the pier and the Yacht club from 16 September to 14 June, and must be kept on a lead.

Between the Yacht club and the Noirmoutier bridge:

Dogs are permitted from 15 June - 15 September only at low tide if before 9am or after 7pm and must be kept on a lead.

Dogs are permitted from 16 September - 14 June at low tide and must be kept on a lead.

2 PLAGE DE LA GRANDE CÔTE

3 PLAGE DE LA BERGÈRE

4 PLAGE DES LAYS

Dogs are permitted from 15 June - 15 September only at low tide if before 9am or after 7pm and must be kept on a lead.

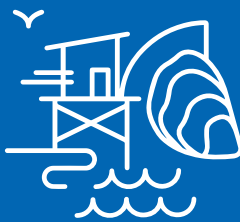
Dogs are permitted from 16 September - 14 June at low tide and must be kept on a lead.

Play your part!

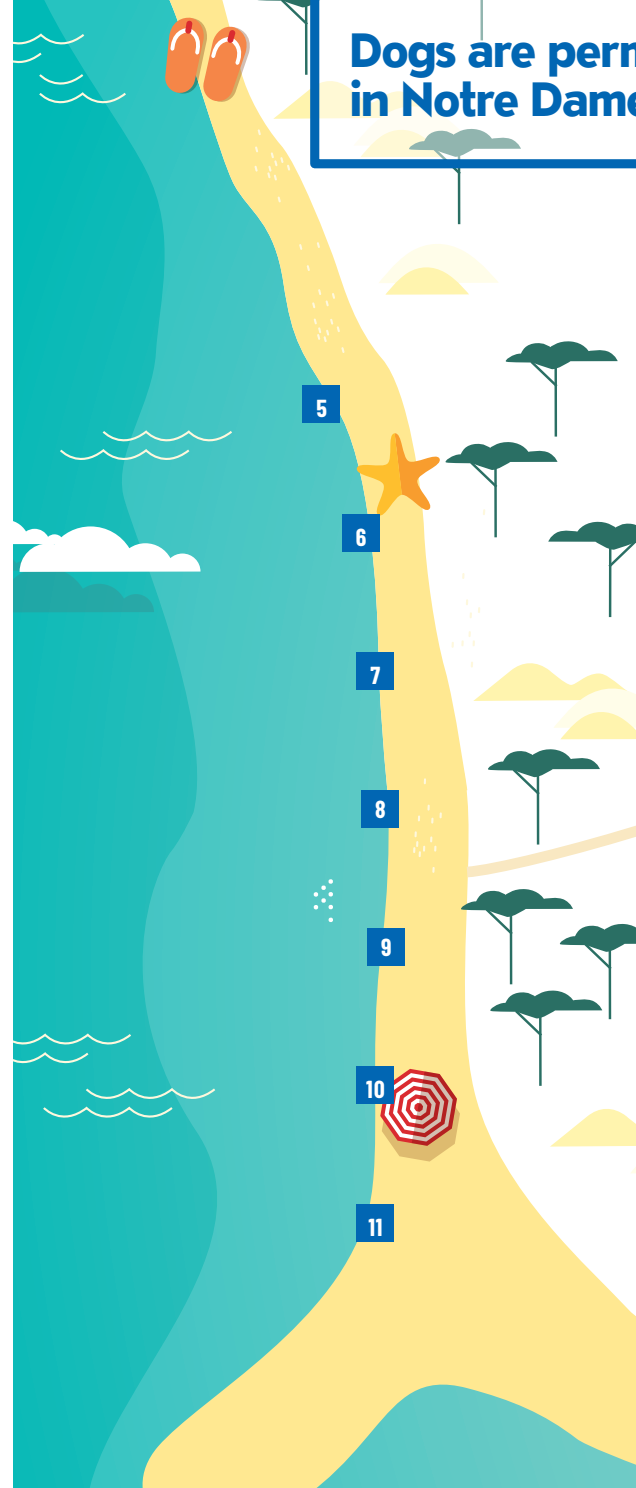
Please be considerate and clean up after your dog and use the dog waste bins provided.

Dog waste bags are available on request from the Tourist Office.

Dog owners who do not clean up after their pets will be subject to a fine.



Dogs are permitted on the beaches in Notre Dame de Monts



5 PLAGE DE LA PARÉE GROLIER

6 PLAGE DU BOIS SORET

7 PLAGE DE LA RENAUDIÈRE

10 PLAGE CENTRALE

11 PLAGE DU MURIER

Dogs permitted from 1 October - 31 March

8 PLAGE DE LA BRAIE

9 PLAGE DES RÉGATES

Dogs permitted from 1 October - 31 March

Dogs permitted from 1 April to 30 September and must be kept on a lead.

* no restrictions for guide dogs

Play your part!

Please be considerate and clean up after your dog and use the dog waste bins provided.

Dogs waste bags are available on request from the Tourist Office.

Dog owners who do not clean up after their pets will be subject to a fine.

